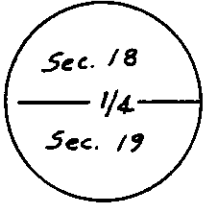


CERTIFIED LAND CORNER RECORDATION

T. 14 N., R. 65 W.

DESCRIPTION OF CORNER EVIDENCE FOUND, AND ORIGINAL RECORD (If known)

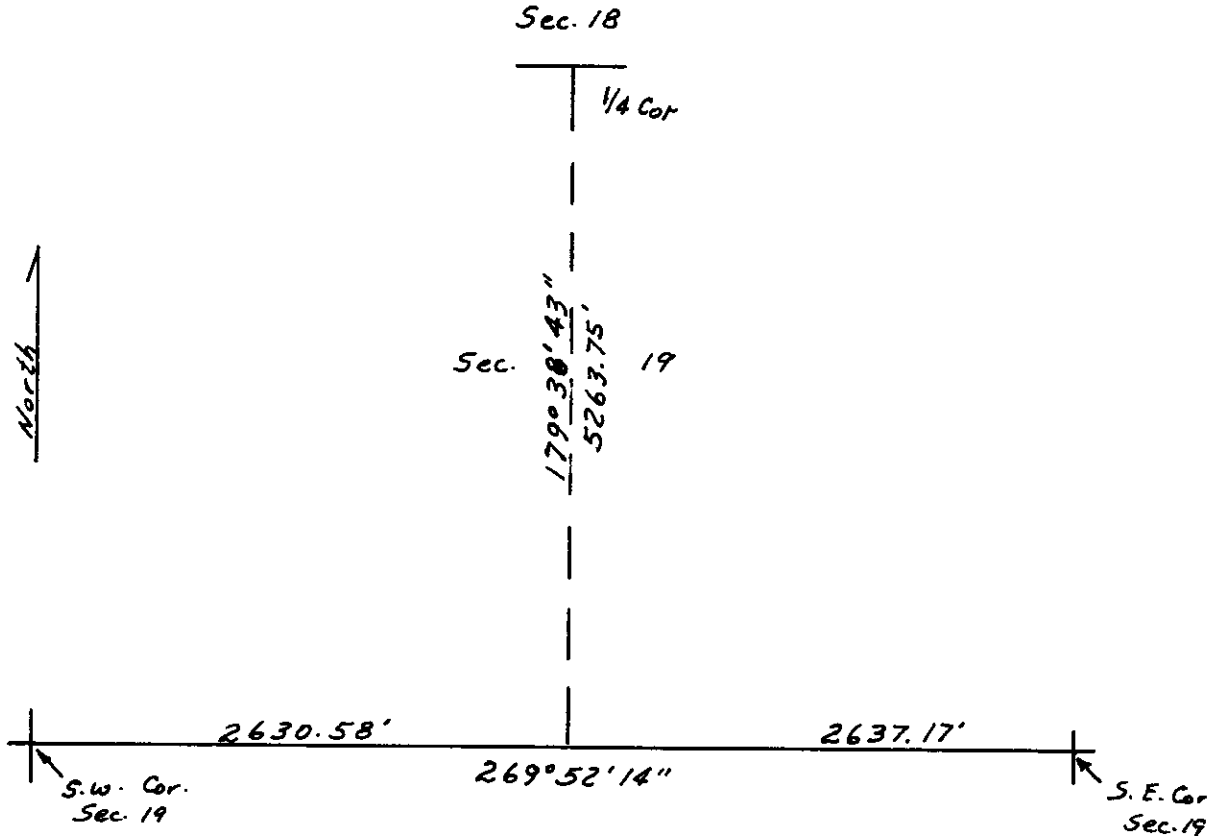


Found 1/4 Stone as indicated in "Corner Record" Filed Nov. 7, 1974 by Robert H. Whitney.

DESCRIPTION OF MONUMENT AND ACCESSORIES ESTABLISHED TO PERPETUATE THE ORIGINAL LOCATION OF THIS CORNER:

Set 24" x 5/8" Rebar with Aluminum I. D. Cap attached. Set Marked Stone Upside Down beside above monument as Memorial.

SKETCH, WITH COURSE AND DISTANCE TO ADJACENT CORNER IF DETERMINED IN THIS SURVEY. (May Sketch or Paste Reproduction on Reverse Side.)



I, Edward C. Fry certify that I have carefully performed or reviewed the work done on the diagrammed corner as reported on this recordation form and approve the same.

Edward C. Fry P.E./L.S. No. 662
Signature of Surveyor Registration No.

STATE OF WYOMING,
Office of Clerk and Recorder,
County of _____

699534

This "corner record" was filed for record on the _____ day of MAY 23 1983, 19____, was noted on the cross-index plat and is assigned page No. _____, in book No. _____.

	County Official		
Cross Index No. <u>N-3</u>	T. _____	R. _____	Mer. _____
	T. _____	R. _____	Mer. _____
	T. _____	R. _____	Mer. _____
	T. _____	R. _____	Mer. _____
	T. _____	R. _____	Mer. _____
	T. _____	R. _____	Mer. _____
	T. _____	R. _____	Mer. _____

N-3 14-65-V